



长城重工
GREAT WALL HEAVY INDUSTRY

破碎筛分成套设备

CRUSHING
AND SCREENING
COMPLETE EQUIPMENT

目录

CATALOGUE

02 公司简介 COMPANY PROFILE

→ 破碎设备 CRUSHING EQUIPMENT

05 PE颞式破碎机 PE JAW CRUSHER

07 PEW欧版颞式破碎机 PEW EUROPEAN TYPE JAW CRUSHER

09 PY弹簧圆锥破碎机 PY SPRING CONE CRUSHER

11 CZS高效圆锥破碎机 CZS HIGH-EFFICIENT CONE CRUSHER

13 HPC液压圆锥破碎机 HPC HYDRAULIC CONE CRUSHER

15 HSC单缸液压圆锥破碎机 HSC SINGLE CYLINDER HYDRAULIC CONE CRUSHER

17 PF反击式破碎机 PF IMPACT CRUSHER

19 PFW欧版反击式破碎机 PFW EUROPEAN TYPE IMPACT CRUSHER

21 VSI冲击式破碎机 VSI VERTICAL SHAFT IMPACT CRUSHER

23 PG辊式破碎机 PG ROLLER CRUSHER

25 PFL立式复合破碎机 PFL VERTICAL COMPOUND CRUSHER

26 PC锤式破碎机 PC HAMMER CRUSHER

→ 配套设备 COROLLARY EQUIPMENT

27 GZD振动给料机 GZD VIBRATING FEEDER

29 YZS圆振动筛 YZS CIRCULAR VIBRATING SCREEN

31 XSD洗砂机 XSD SAND WASHER

33 XL砂石洗选机 XL SAND AND STONE WASHER

35 SZF直线振动筛 SZF LINEAR VIBRATING SCREEN

36 胶带输送机 BELT CONVEYOR

37 移动破碎站 MOBILE CRUSHING PLANT

41 石料生产线 STONE CRUSHING PLANT

44 制砂生产线 SAND MAKING LINE

公司简介

COMPANY PROFILE

郑州市长城重工机械有限公司位于郑州市上街区机械装备工业园，自创建以来，公司凭借雄厚的技术实力和精良的设施装备，经过二十多年生产、管理经验的探索与创新，已成为行业内颇具竞争力和影响力的矿山机械制造商。

Zhengzhou Great Wall Heavy Industry Machinery Co.,Ltd is located in Mechanical Equipment Industrial Park of Shangjie District, Zhengzhou city. Since found, depending on our strong technical strength and sophisticated facilities, after more than 20 years' production and research and innovation on management experience, our company has become a competitive and influential mining machine manufacturer.

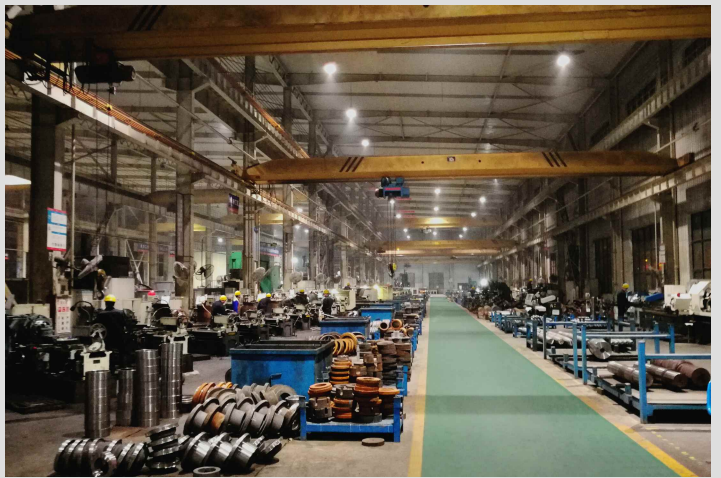


公司主要生产破碎、磨粉设备，主打产品包括圆锥破碎机、反击式破碎机、立式冲击破碎机、颚式破碎机、磨粉机等，能为矿业、建材、冶金、铁路、公路、桥梁、水电等多个领域提供石料生产线、制砂生产线、移动破碎站、磨粉生产线等成套机械设备。

Great Wall Heavy Industry mainly produces crushing and grinding equipment, main products include cone crusher, impact crusher, vertical impact crusher, jaw crusher, milling machine, etc. We could provide complete sets of stone production line, sand making line, mobile crushing plant and grinding plant for mining, building materials, metallurgy, railways, highways, bridges, water and electricity and other fields.

长城重工汇集了一批高素质的销售人员和技术精湛的售后服务工程师，在全国多个省区设立了销售服务网点，从而保证了销售渠道的畅通与售后服务的完善。公司具有独立的进出口经营权，拥有一支精通国际贸易业务的专业团队，力求为国外客商提供高效、贴心的服务。长期以来，公司一直以开放的姿态与多家同行和科研机构保持着密切交流与合作，使公司核心产品始终保持行业先进水平，赢得了广泛的国内外市场。目前，公司产品不仅畅销国内二十多个省区，还远销东欧、中东、亚洲、非洲、北美洲、南美洲、大洋洲的几十个国家和地区。

Great Wall Heavy Industry brings together a large number of high quality salesman and skilled after-sales service engineers, established lots of sales service networks in many provinces and districts, so that we can guarantee the smooth marketing channel and perfect after sales service. Our company has independent import-export operation right and a group of professional international salesmen, so as to provide high efficient and thoughtful service for customers world wide. For a long time, Great Wall Heavy Industry embraces open approach to keep communication and cooperation with many overseas counterparts and scientific research institutions, which enables our core products leading in mining machinery and owns wide market at home and abroad. At present, our core products not only sell well in more than twenty provinces and districts, but also in tens of countries and regions in Eastern Europe, Middle East, Asia, Africa, North America, South America and Oceania.



多年来，长城重工以良好的企业信誉和形象赢得了国内外广大客户的信任与支持，在激烈的行业竞争中不断自我完善、发展壮大。展望未来，公司面临的是更多的发展机遇和更严峻的竞争考验，为了打造卓越的“长城品质”，长城员工必将团结一致，与时俱进，再铸辉煌。



For many years, Great Wall Heavy Industry wins broad trust and support of customers world wide by good reputation and image, continues to improve ourselves and grows stronger in fierce industrial competition. Look into the future, being faced with more development opportunities and severe competition, to build excellent Great Wall Quality, we will certainly be united and keep pace with the times to make brighter future.

PE颞式破碎机

PE JAW CRUSHER

产品简介

颞式破碎机用于破碎抗压强度在320MPa以下的各种矿石和岩石，一般用于物料的初级破碎。该机广泛应用于矿山、建材、冶金、电力、水利、交通等众多领域。

Product Introduction

Jaw crusher is used for crushing all kinds of ores and rocks with compressive strength below 320MPa. It is generally used for primary crushing of materials. The machine is widely used in mining, building materials, metallurgy, electric power, water conservancy, transportation and many other fields.

工作原理

电动机通过皮带轮和皮带驱动颞破偏心轴运转，使动颞按照预定轨迹作往复运动，物料进入破碎腔后被挤压、搓碾从而被破碎，破碎后的物料由底部的排料口排出。

Working Principle

The electric motor drives eccentric shaft to move via pulley and belt which makes movable jaw move back and forth according to the predetermined track. Material is extruded, rolled and crushed after entering the crushing chamber. Crushed material would be discharged through bottom discharge mouth.



性能特点

- 1、优化的深腔结构以及合理的动颞运行参数使设备产量和破碎比大大提升；
- 2、采用复摆原理，设备结构精简，性能稳定，操作和维护方便；
- 3、垫片式排料调整装置，使排料口调节范围更大，可满足客户多种加工需求；
- 4、相比其他高速运转的破碎机噪音低，粉尘少。

Performance Features

- 1,Optimized deep cavity structure and reasonable running parameters of movable jaw greatly increase the equipment capacity and its crushing ratio;
- 2, Adopting compound pendulum principle, the equipment is simple in structure, stable in performance, easy in operation and maintenance;
- 3,Gasket type discharge adjustment device makes the adjustment range of discharge mouth larger, could meet clients' various processing needs;
- 4,Compared with other high-speed crushers, it has low noise and less dust.



主要技术参数 Main Technical Specifications

项目 型号 Model	进料口尺寸 Feed Opening Size(mm)	最大进料边长 Max Feeding Size(mm)	出料口调节范围 Adjustable Range of Outlet(mm)	产量 Capacity (t/h)	电机功率 Motor Power(kw)	重量 Weight (t)	外形尺寸 Overall Dimension (mm)
PE250×400	250×400	200	20-50	5-20	15	2.9	1430×1310×1340
PE400×600	400×600	350	40-100	15-60	30-37	6.8	1700×1732×1653
PE500×750	500×750	425	50-100	40-110	45-55	11.2	2035×1921×2000
PE600×900	600×900	500	65-160	60-140	55-75	16.5	2290×2206×2370
PE750×1060	750×1060	630	80-150	110-250	90-110	29	2655×2302×3110
PE900×1200	900×1200	750	95-165	150-350	110-132	54.5	3789×2826×3025
PE1000×1200	1000×1200	850	105-185	180-400	132-160	56.5	3900×2826×3025
PE1200×1500	1200×1500	1020	150-300	400-800	220-250	99.6	4930×3150×3700
PEX150×250	150×250	125	10-40	1-3	5.5	0.95	896×745×935
PEX150×750	150×750	125	12-45	5-16	15	3.8	1205×1495×1203
PEX250×750	250×750	210	25-60	10-40	22-30	5	1667×1545×1020
PEX250×1000	250×1000	210	25-60	15-50	30-37	6.8	1964×1550×1380
PEX250×1200	250×1200	210	25-60	20-60	37-45	8.5	2192×1605×1415
PEX400×1200	400×1200	320	35-95	30-100	45-55	11.7	2256×2100×1960

注：技术数据如有变动，恕不另行通知。 Note: Any change of technical data will not inform additionally.

PEW欧版颚式破碎机

PEW EUROPEAN TYPE JAW CRUSHER

产品简介

PEW欧版颚式破碎机是我公司在吸收欧美先进颚式破碎机技术基础上，经过优化设计生产的新型颚式破碎机。用于粗碎、中碎各种矿石和岩石，尤其是破碎硬度较大的物料更具有优越性。广泛应用于矿山、建材、冶金、电力、水利、交通等领域。

Product Introduction

PEW European jaw crusher is a new type of jaw crusher designed and produced by our company on the basis of absorbing advanced jaw crusher technology from Europe and America. It is used for coarse crushing, medium crushing of all kinds of ores and rocks, much more advantageous when crushing hard material. Widely used in mines, building materials, metallurgy, electric power, water conservancy, transportation and other fields.



工作原理

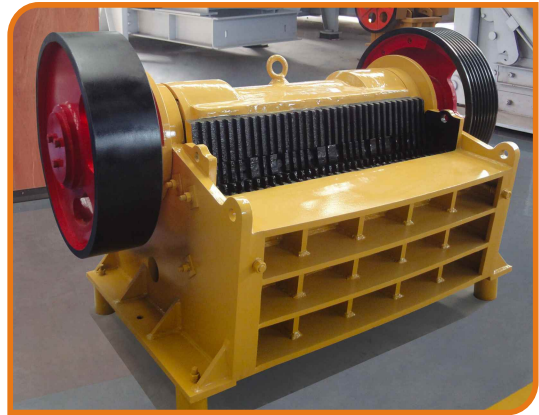
电动机驱动皮带和皮带轮，通过偏心轴使动颚前后上下摆动，当动颚推动动颚板向定颚板运动时，物料被挤压、搓碾从而被破碎。当动颚和动颚板在偏心轴和弹簧的作用下后退时，先前已被破碎的物料从破碎腔的下部排料口排出。随着设备的连续运转，物料被持续不断地破碎、排出，实现批量生产。

Working Principle

The motor drives belt and pulley, and makes the movable jaw swing up and down through the eccentric shaft. When movable jaw pushes the movable jaw plate to move towards the fixed jaw plate, materials are squeezed, rolled and crushed. When the movable jaw and movable jaw plate move backward under the action of eccentric shaft and spring, previously broken materials are discharged from the bottom discharge mouth of the crushing chamber. With the continuous operation of the equipment, the material is continuously broken and discharged to achieve volume production.

性能特点

- 1、机架采用加强型焊接结构，轴承座为整体式铸钢结构，偏心轴采用高强度锻造件制作，有限元软件分析优化，使设备具有更高的耐冲击性，故障率低，可靠性高；
- 2、对称的“V”型破碎腔设计，大冲程以及合理的转速匹配使破碎比更大，产量更高，出料粒度更加均匀；
- 3、选用大规格轴承，承载能力更高，同时轴承室采用有效的迷宫密封方式使轴承使用寿命大大延长；
- 4、排料口调节采用楔块调整装置，使调节操作更加简单、安全和快捷。



Performance Features

- 1,The machine frame is of reinforced welded structure, bearing block is of integral cast steel structure, eccentric shaft is made of high-strength forging parts, and the finite element software analysis and optimization make the equipment have higher impact resistance, low failure rate and high reliability;
- 2,Symmetrical "V" type crushing cavity design, large stroke and reasonable speed matching make crushing ratio bigger, capacity higher, and output particle size more uniform;
- 3,Large size bearings are used for higher carrying capacity. At the same time, the bearing chamber adopts effective labyrinth sealing method to greatly extend the service life of bearing;
- 4,Wedge adjustment device is adopted in the adjustment of discharge mouth, which makes the adjustment operation much easier, safer and faster.



主要技术参数 Main Technical Specifications

型号 Model	项目 Item	进料口尺寸 Feed Opening Size(mm)	最大进料粒度 Max Feeding Size(mm)	出料口调节范围 Adjustable Range of Outlet(mm)	产量 Capacity (t/h)	电机功率 Motor Power(kw)	重量 Weight (t)	外形尺寸 Overall Dimension (mm)
PEW180×1300		180×1300	150	10-30	12-35	30-37	6	1320×2150×1175
PEW250×1000		250×1000	220	20-40	15-50	30-37	5.9	1400×1850×1310
PEW250×1200		250×1200	220	20-40	18-60	37-45	7	1400×2050×1310
PEW400×600		400×600	350	35-85	15-70	37-45	8	1920×1460×1840
PEW760×1100		760×1100	640	75-200	150-310	110-132	24	2950×2360×2760
PEW860×1100		860×1100	720	100-225	200-420	132-160	32	3300×2320×3120
PEW1100×1200		1100×1200	930	150-275	300-600	185-200	59.2	4140×2660×3560

注：技术数据如有变动，恕不另行通知。 Note: Any change of technical data will not inform additionally.

PY弹簧圆锥破碎机

PY SPRING CONE CRUSHER

产品简介

弹簧圆锥破碎机主要用于中碎和细碎中等以上硬度的物料，例如玄武岩、花岗岩、河卵石、铁矿石等，广泛应用于冶金、建材、矿山等行业。

Product Introduction

Spring cone crusher is mainly used for medium and fine crushing of medium degree hardness materials and above, such as basalt, granite, river stone, iron ore, etc. It is widely used in metallurgy, building material, mining and other fields.

工作原理

电动机通过弹性联轴器、传动轴和一对锥齿轮带动偏心套运转，迫使偏心套内的主轴带动破碎壁做旋摆运动，使破碎壁时而靠近轧臼壁，时而远离轧臼壁，物料在破碎腔内不断地受到挤压、弯曲和冲击而被破碎，破碎后的物料在自重作用下从底部排料口排出。

Working Principle

The motor drives eccentric bushing via spring coupling, transmission shaft and a couple of cone gear wheel, the main shaft of eccentric bushing would drive mantle to do pendulum movement, so as to mantle would be close to concave and far from concave. Materials would be continuously extruded, bended and impacted, crushed materials would be discharged from bottom discharge mouth under the action of gravity.



性能特点

- 1、结构可靠，性能稳定；
- 2、易损件使用寿命长，运行成本低；
- 3、采用干油密封方式，使粉尘与润滑油隔离，延长了设备使用寿命；
- 4、稀油站连续供油润滑，减少停机维护时间。

Performance Features

- 1, Reliable structure, steady performance;
- 2, Long life for wear parts, low working cost;
- 3, Dry oil seal is adopted to isolate dust from lubricating oil and extend the service life of the equipment;
- 4, Oil station continuously supplies oil for lubrication, which to reduce downtime for maintenance.



主要技术参数 Main Technical Specifications

型号 Model	项目 Item	最大进料粒度 Max Feeding Size(mm)	出料口调节范围 Adjustable Range of Outlet(mm)	处理能力 Capacity (t/h)	电机功率 Motor Power(kw)	重量 Weight (t)	外形尺寸 Overall Dimension (mm)
PYB600		65	12-25	20-40	30	5	2234×1370×1675
PYD600		35	3-13	12-23	30	5.5	2234×1370×1675
PYB900		115	15-50	50-90	55	11.2	2692×1640×2350
PYZ900		60	5-20	20-65	55	11.2	2692×1640×2350
PYD900		45	3-13	15-50	55	11.3	2692×1640×2350
PYB1200		145	20-50	110-168	110	24.7	2790×1878×2844
PYZ1200		100	8-25	42-135	110	25	2790×1878×2844
PYD1200		50	3-15	18-105	110	25.6	2790×1878×2844
PYB1750		215	25-60	280-480	160	50.3	3910×2894×3809
PYZ1750		185	10-30	115-320	160	50.3	3910×2894×3809
PYD1750		85	5-15	75-230	160	50.4	3910×2894×3809
PYB2200		300	30-60	490-800	260/280	80	4622×3302×4470
PYZ2200		230	10-30	200-580	260/280	80	4622×3302×4470
PYD2200		100	5-15	120-340	260/280	81.4	4622×3302×4470

注：技术数据如有变动，恕不另行通知。 Note: Any change of technical data will not inform additionally.

CZS高效圆锥破碎机

CZS HIGH-EFFICIENT CONE CRUSHER

产品简介

CZS高效圆锥破碎机是在PY弹簧圆锥破碎机基础上优化改进的高效机型。广泛应用于矿山、建材、冶金等行业，适用于中碎和细碎玄武岩、河卵石、花岗岩、石英石、金属矿石等高硬度物料。

Product Introduction

CZS High-efficient cone crusher is a high-performance type optimized and improved on the basis of PY series spring cone crusher. It is widely used in fields of mining, building material, metallurgy, etc. It is suitable for medium crushing and fine crushing on basalt, river stone, granite, quartz, metal ore, etc with high hardness materials.

工作原理

工作时，电动机通过皮带轮、三角带、传动轴、锥齿轮带动偏心套旋转，主轴在偏心套的迫动下做旋转摆动，使得主轴上方的破碎壁时而靠近又时而离开轧臼壁，物料在破碎壁与轧臼壁组成的环形破碎腔内不断地受到冲击、挤压和弯曲而被破碎，破碎后的物料从底部排料口排出。

Working Principle

When it works, electric motor drives eccentric bushing via pulley, V-belt, transmission shaft and bevel gear. The main shaft would do pendulum movement under force of eccentric shaft, so as to mantle would be close to concave and far from concave. Materials would be continuously extruded, bended and impacted in the annular crushing cavity formed by mantle and concave, crushed materials would be discharged from bottom discharge mouth.



性能特点

- 1、优化的腔型设计，合理的运行速度与冲程相结合，使其生产能力大大提升；
- 2、液压清腔系统可迅速清理破碎腔，大大减少了停机时间；
- 3、运用层压破碎原理，成品立方体增多，粒度均匀，级配合理；
- 4、多点控制的独立稀油润滑系统，可确保轴承润滑的双重保护，保证设备安全运行；
- 5、过铁保护装置和自动控制系统，可实现自动保护。



Performance Features

- 1, The combination of optimized cavity design, reasonable running speed and stroke , causes its bigger production capacity;
- 2, Hydraulic cleaning system could clean the crushing cavity fast, this reduces downtime;
- 3, Based on lamination crushing principle, there are more cubic end products, particle size is even, gradation is also reasonable;
- 4, System of multi-point control of independent thin oil lubrication can ensure the double protection of bearing lubrication, ensure the safe operation of the equipment;
- 5, Over-iron protection device and automatic control system can achieve automatic protection.

主要技术参数 Main Technical Specifications

型号 Model	腔型 Cavity Type	最大给料尺寸 Max Feeding Size(mm)	排料口调节范围 Adjustable Range of Outlet(mm)	处理能力 Capacity (t/h)	电机功率 Motor Power(kw)	机器重量 Weight (t)	外形尺寸 Overall Dimension (mm)
CZS36B	细型 Fine	85	9-22	45-91	75	14.5	2656×1746×2410
	粗型 Coarse	150	13-38	59-163			
	特粗型 Extra Coarse	152	25-38	118-163			
CZS36D	细型 Fine	35	3-13	27-90	75	15	2656×1746×2410
	中型 Medium	65	5-16	36-100			
	粗型 Coarse	85	6-19	59-129			
CZS51B	细型 Fine	115	13-31	109-181	160	26.5	2958×2354×3156
	中型 Medium	178	16-38	132-253			
	粗型 Coarse	205	19-51	172-349			
	特粗型 Extra Coarse	220	25-51	236-358			
CZS51D	细型 Fine	54	3-16	36-163	160	27	2958×2354×3156
	中型 Medium	76	6-16	82-163			
	粗型 Coarse	89	8-25	109-227			
	特粗型 Extra Coarse	113	16-25	209-236			
CZS66B	细型 Fine	178	16-38	181-327	220	51	3941×2954×3771
	中型 Medium	205	22-51	258-417			
	粗型 Coarse	228	25-64	299-635			
	特粗型 Extra Coarse	313	38-64	431-645			
CZS66D	细型 Fine	60	5-13	90-209	220	52	3941×2954×3771
	中型 Medium	76	6-19	136-281			
	粗型 Coarse	113	10-25	190-336			
	特粗型 Extra Coarse	125	13-25	253-336			
CZS84B	细型 Fine	236	19-38	381-726	315	90	4613×3251×4732
	中型 Medium	284	25-51	608-998			
	粗型 Coarse	314	31-64	789-1270			
	特粗型 Extra Coarse	391	38-64	880-1361			
CZS84D	细型 Fine	89	5-16	190-408	315	92	4613×3251×4732
	中型 Medium	113	10-19	354-508			
	粗型 Coarse	151	13-25	454-599			
	特粗型 Extra Coarse	172	16-25	508-653			

注：技术数据如有变动，恕不另行通知。 Note: Any change of technical data will not inform additionally.

HPC液压圆锥破碎机

HPC HYDRAULIC CONE CRUSHER

产品简介

HPC液压圆锥破碎机是吸收德国先进技术，并结合中国金属材料性能而设计的一款高性能破碎机。广泛应用于矿山、冶金、建材、化工、陶瓷等行业，可对玄武岩、安山岩、辉绿岩、鹅卵石、石英石、硅灰石、花岗岩、金矿石、铁矿石等中等以上硬度的物料进行中、细碎作业。尤其在产品粒形要求严格、成品率要求较高、自动化程度高的破碎生产线中被优先选用。

Product Introduction

HPC hydraulic cone crusher is a high-performance model which uses German advanced technology and combines with Chinese metal material property. It is widely used in fields of mining, metallurgy, building material, chemical, ceramic, etc. It can achieve medium and fine crushing for medium and above hardness material, such as basalt, andesite, diabase, cobblestone, quartz, wollastonite, granite, gold ore, iron ore, etc. It is prior selection especially when the crushing line is requested with strict product granularity, high finished product rate, high automatic degree.

工作原理

动锥在偏心套带动作用下做旋摆运动，物料在破碎壁与轧臼壁之间的破碎腔内被挤压、搓碾，受到多个方向的作用力，根据自身纹理破碎并被打磨，形成稳定的石料颗粒，符合出料要求的物料从破碎壁旋摆间隙处下落排出，其余物料继续破碎，直至达到最终要求。

Working Principle

Movable cone of crusher swings by force of eccentric bushing which makes material between mantle and concave squeezed and rolled. Material is crushed according to its own texture under strength from different directions, finally it would form stable stone shape. End product which meets the requirement would fall from swing gap of mantle, other materials would be crushed again until it meets requirement.

性能特点

- 1、采用固定主轴、小球面轴瓦结构，破碎冲程、破碎速度和破碎腔型合理结合，破碎效率高，生产能力比传统圆锥破碎机显著提升；
- 2、特有的“颗粒间层压破碎”原理，使成品中的立方体含量明显提高，细粒级物料大大增加，很好地满足了高品质骨料的使用要求；
- 3、当铁块等不可破碎物进入破碎腔时，液压保护装置会自动将其释放，然后自动复位进入正常运行状态；
- 4、排料口调节、清腔均采用液压技术，操作方便快捷，减少停机时间，提高工作效率。



Performance Features

- 1, Adopt fixed spindle and small spherical bush structure. Crushing stroke, crushing speed and crushing cavity type are combined reasonably which leads to high crushing efficiency and production capacity is significantly higher than traditional cone crusher;
- 2, The peculiar principle of "intergranular lamination crushing" significantly increases the cube content in the finished products and also the number of fine-grained materials, which can meet the requirements for the use of high-quality aggregate;
- 3, When iron or other non-breakable materials enter the crushing chamber, the hydraulic protection device will automatically release them, then automatically reset and back to normal operation state;
- 4, Hydraulic technology is adopted for the adjustment of discharge mouth and cavity cleaning, which is convenient and fast to operate, reduces downtime and improves work efficiency.



主要技术参数 Main Technical Specifications

型号 Model	腔型 Cavity Type	最大给料尺寸 Max Feeding Size(mm)	最小排料口 Minimum Output Size(mm)	处理能力 Capacity (t/h)	电机功率 Motor Power(kw)	机器重量 Weight (t)	外形尺寸 Overall Dimension (mm)
HPC200	F2(超细Extra Fine)	75	10	90-190	160	13.4	2135×1750×1927
	F1(细Fine)	95	13	120-200			
	M(中Medium)	125	16	140-220			
	C1(粗Coarse)	185	19	150-250			
HPC300	F2(超细Extra Fine)	80	10	110-240	250	18.1	2725×2110×2182
	F1(细Fine)	105	13	130-260			
	M(中Medium)	150	16	175-320			
	C1(粗Coarse)	210	20	190-380			
	C2(超粗Extra Coarse)	230	25	220-440			
HPC400	F2(超细Extra Fine)	90	10	135-320	315	26	2975×2370×2495
	F1(细Fine)	110	14	180-345			
	M(中Medium)	196	20	255-430			
	C1(粗Coarse)	251	25	295-560			
	C2(超粗Extra Coarse)	295	30	300-630			
HPC500	F2(超细Extra Fine)	95	13	220-430	400	37	3447×2830×2977
	F1(细Fine)	135	16	280-455			
	M(中Medium)	210	22	345-605			
	C1(粗Coarse)	290	30	405-790			
	C2(超粗Extra Coarse)	330	38	445-855			

注：技术数据如有变动，恕不另行通知。 Note: Any change of technical data will not inform additionally.

HSC单缸液压圆锥破碎机

HSC SINGLE CYLINDER HYDRAULIC CONE CRUSHER

产品简介

HSC单缸液压圆锥破碎机是一款经过优化设计的高性能单缸结构液压圆锥破碎机，主要用于矿山、建材、冶金等行业，可对花岗岩、石灰石、河卵石、玄武岩、铁矿石等各种矿石、岩石进行中、细碎作业。

Product Introduction

HSC single cylinder hydraulic cone crusher is a high performance single cylinder structure hydraulic cone crusher after optimal designed, mainly used in industry of mining, building materials, metallurgy, etc. It could process medium and fine crushing for granite, limestone, river stone, basalt, iron stone, etc various rocks.

工作原理

机器工作时，电动机通过三角带带动水平传动轴旋转，水平传动轴通过锥齿轮带动偏心套旋转，动锥部在偏心套的迫动下作旋摆运动，物料进入破碎腔后，在破碎壁与轧臼壁之间不断受到冲击、挤压被破碎，破碎后的物料从下部排出。



Working Principle

When machine works, electric motor would drive level transmission shaft to rotate via V-belt, then transmission shaft would drive eccentric bushing to rotate by bevel gear, the moving cone makes a swing motion under the forced action of eccentric bushing. After the material enters crushing chamber, it is continuously impacted and crushed between the mantle and concave, finally crushed material is discharged from crusher bottom.

性能特点

- 1、合理的偏心量和摆频以及特殊的破碎腔型设计，使设备破碎比更大，产量更高，粒型更优；
- 2、集排料口调节和过载保护功能于一体，结构精简，使用方便；
- 3、智能化控制系统可实时监测设备运行状况，以便及时调整，使设备始终保持理想运行状态；
- 4、加强型设备结构以及先进的过载保护系统，保障设备长期安全运行。

Performance Features

- 1, Reasonable eccentricity and swing frequency as well as special crushing cavity design make the equipment with larger crushing ratio, higher capacity and better grain shape;
- 2, Set discharge port adjustment and overload protection function in one, simple structure, easy to use;
- 3, The intelligent control system can monitor running status of the equipment in real time, so as to make timely adjustment and keep the equipment in an ideal running state;
- 4, Enhanced equipment structure and advanced overload protection system ensure long-term safe operation of the equipment.



主要技术参数 Main Technical Specifications

型号 Model	腔型 Cavity Type	最大给料尺寸 Max Feeding Size(mm)	最小排料口 Minimum Output Size(mm)	处理能力 Capacity (t/h)	电机功率 Motor Power(kw)	外形尺寸 Overall Dimension (mm)
HSC100	C2(超粗Extra Coarse)	240	22	85-170	≤90	1550×1575×2545
	C1(中粗Medium Coarse)	200	19	70-130		
	F(细Fine)	135	10	45-115		
	F1(中细Medium Fine)	65	8	35-80		
	F2(超细Extra Fine)	35	4	27-60		1550×1575×1965
HSC160	C2(超粗Extra Coarse)	360	25	120-345	≤160	1875×1920×3195
	C1(中粗Medium Coarse)	300	22	105-305		
	C(粗Coarse)	235	19	90-275		
	F(细Fine)	185	13	66-210		
	F1(中细Medium Fine)	90	10	65-165		
	F2(超细Extra Fine)	50	6	48-105		1875×1920×2400
HSC250	C2(超粗Extra Coarse)	450	35	255-605	≤250	2100×2320×4096
	C1(中粗Medium Coarse)	400	29	215-515		
	C(粗Coarse)	300	25	190-490		
	F(细Fine)	215	16	110-395		
	F1(中细Medium Fine)	110	13	115-340		
	F2(超细Extra Fine)	70	8	90-255		2100×2320×2780
HSC315	C2(超粗Extra Coarse)	560	41	335-1050	≤315	2380×2735×4630
	C1(中粗Medium Coarse)	500	38	305-895		
	F(细Fine)	275	16	170-665		
	F1(中细Medium Fine)	135	16	190-505		
	F2(超细Extra Fine)	65	13	205-320		2380×2735×3265

注：技术数据如有变动，恕不另行通知。 Note: Any change of technical data will not inform additionally.

PF反击式破碎机

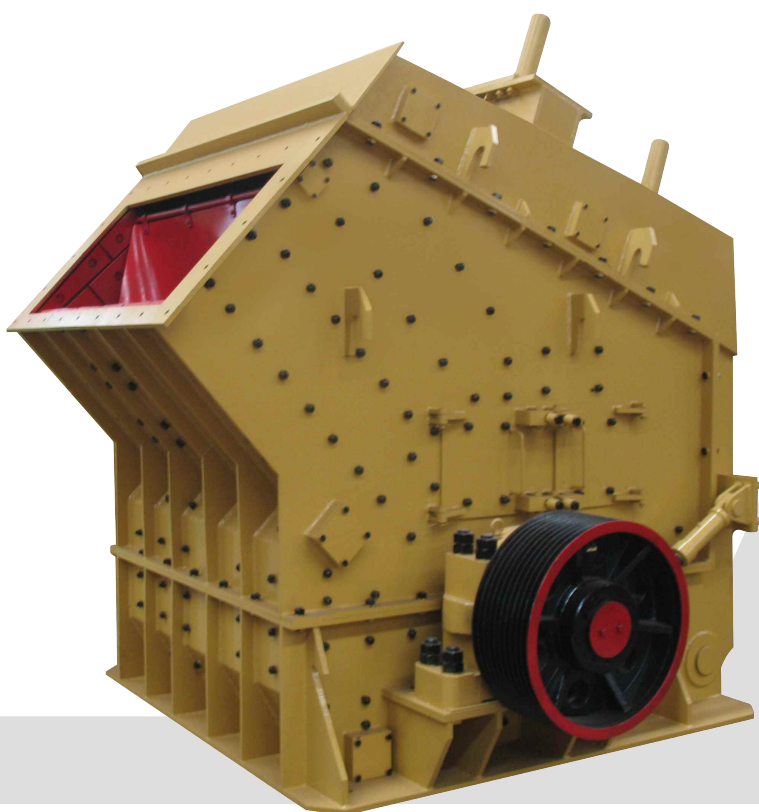
PF IMPACT CRUSHER

产品简介

本机用于中碎、细碎抗压强度不超过300MPa的物料，例如：花岗岩、大理石、石灰石、混凝土等。主要应用于公路、铁路、水利、电力、建筑等行业建设用砂石料的生产。

Product Introduction

This machine is used for medium and fine crushing on materials with compressive strength less than 300MPa, such as granite, marble, limestone, concrete, etc. Mainly used in highway, railway, water conservancy, electric power, construction and other industries with sand and stone production.



工作原理

设备工作时，电动机带动转子高速旋转，物料进入破碎腔后，与转子上的板锤撞击破碎，后又被抛向反击装置上再次破碎，然后又从反击衬板上弹回到板锤作用区重新破碎，此过程重复进行，物料由大到小在破碎腔内被反复破碎，直到物料被破碎至所需粒度，由出料口排出。

Working Principle

When the equipment is in operation, electric motor drives the rotor to rotate at a high speed. After material enters crushing chamber, it is smashed against the plate hammer on the rotor, then thrown to the counterattack device to be broken again. The process is repeated, material would be crushed again and again in crushing cavity until crushed material meets the requirement, then would be discharged from outlet.



性能特点

- 1、产品形状呈立方体，粒形好；
- 2、出料粒度大小可调，简化破碎流程；
- 3、高铬板锤，抗冲击，耐磨损；
- 4、设备结构简单，操作、维护方便。

Performance Features

- 1, Cubic shaped end products;
- 2, Adjustable end product size, simple crushing process;
- 3, High chrome blow bar, impacting resistance, abrasion resistance;
- 4, Simple structure, easy operation and maintenance.

主要技术参数 Main Technical Specifications

项目 型号 Item Model	规格 Rotor Size (mm)	进料口尺寸 Feed Opening Size(mm)	最大进料边长 Max Feeding Size (mm)	处理量 Capacity (t/h)	电机功率 Motor Power(kw)	重量 Weight (t)	外形尺寸 Overall Dimension (mm)
PF-1007	Φ1000×700	400×730	250	15-60	37-55	9.5	2400×1560×2660
PF-1010	Φ1000×1050	400×1080	300	50-90	55-75	13.2	2440×2250×2630
PF-1210	Φ1250×1050	400×1080	300	70-130	110-132	16.5	2700×2340×2870
PF-1214	Φ1250×1400	400×1430	300	90-180	132-160	19.5	2700×2695×2900
PF-1315	Φ1320×1500	860×1520	350	120-250	160-200	24.8	2860×2800×3050

注：技术数据如有变动，恕不另行通知。 Note: Any change of technical data will not inform additionally.

PFW欧版反击式破碎机

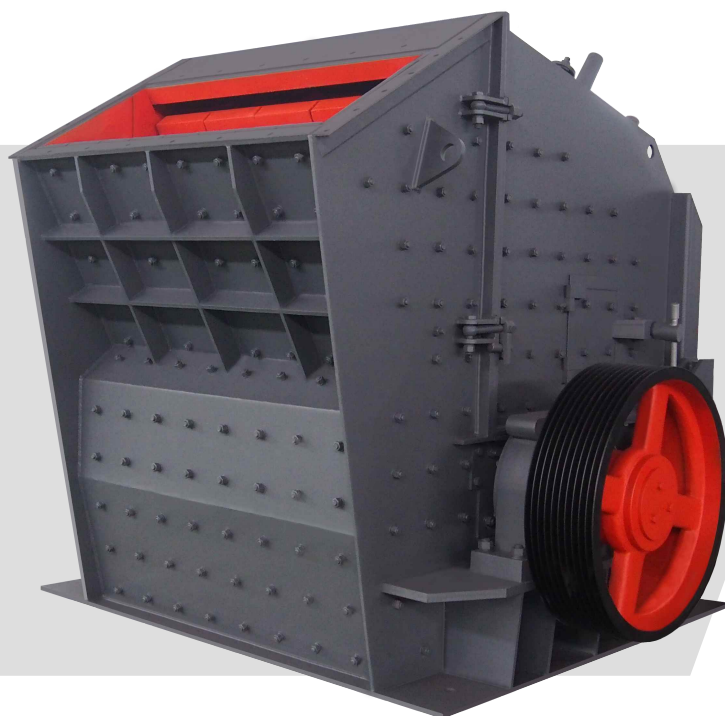
PFW EUROPEAN TYPE IMPACT CRUSHER

产品简介

欧版反击式破碎机可对花岗岩、重晶石、大理石、石灰石等中等硬度以下物料进行粗碎、中碎、细碎作业，主要用于公路、铁路、水利、电力、建筑等行业建设用砂石料的生产。

Product Introduction

European type impact crusher could process coarse, medium and fine crushing on materials with hardness below medium level, such as granite, barite, marble, limestone and so on. Mainly used in highway, railway, water conservancy, electric power, construction and other industries with sand and stone production.



工作原理

该机是利用冲击能来破碎物料。当物料进入板锤作用区时，受到板锤的高速冲击而破碎，并被抛向反击装置的反击衬板上再次破碎，然后又从反击衬板上弹回到板锤作用区重新破碎。如此过程重复进行，直到物料被破碎至所需粒度，由机器底部排出。

Working Principle

This machine uses impact energy to crush material. When the materials enter the zone of blow bar, they will be crushed by high-speed impact of blow bar, and thrown to impact liners on impact device to be crushed again, then would be rebounded to blow bar zone for crushing again. This process is repeated until materials are broken to the required particle size and discharged from the outlet.



性能特点

- 1、重型化的转子设计，转子转动惯量大，破碎能力强；
- 2、独特的板锤固定装置，使得板锤可靠性更高，更换方便快捷；
- 3、液压调整装置，可以迅速完成出料粒度调整；液压开顶装置，可以迅速完成板锤等易损件的更换，减少停机时间，提高工作效率；
- 4、设备结构紧凑，刚性强。

Performance Features

- 1,Heavy rotor design, large rotor rotary inertia, strong crushing capacity;
- 2,The unique plate hammer fixing device makes the plate hammer more reliable and convenient to be replaced;
- 3,Hydraulic adjustment device can quickly finish the material size adjustment; hydraulic opening device can quickly replace plate hammer or other wearing parts, it reduces downtime, improves work efficiency;
- 4,Compact structure and strong rigidity.

主要技术参数 Main Technical Specifications

项目 型号 Item Model	规格 Rotor Size (mm)	进料口尺寸 Feed Opening Size(mm)	最大进料边长 Max Feeding Size (mm)	处理量 Capacity (t/h)	电机功率 Motor Power(kw)	重量 Weight (t)	外形尺寸 Overall Dimension (mm)
PFW1210 II	Φ1150×960	1100×1030	400	90-160	90-110	17	2400×1870×2550
PFW1214 II	Φ1150×1400	1100×1430	500	130-200	132-160	22	2400×2310×2550
PFW1315 II	Φ1300×1500	1200×1530	600	180-320	160-200	29	2700×2570×2800
PFW1318 II	Φ1300×1800	1200×1830	700	240-400	200-250	34	2700×2870×2800
PFW1415 II	Φ1400×1500	1300×1530	700	300-480	200-250	38	2900×2700×3000
PFW1210 III	Φ1150×960	570×990	250	70-120	90-110	15	2550×1870×2100
PFW1214 III	Φ1150×1400	570×1430	250	90-190	132-160	19	2550×2310×2100
PFW1315 III	Φ1300×1500	625×1530	300	150-270	160-200	25	2960×2570×2380
PFW1318 III	Φ1300×1800	625×1830	300	220-320	200-250	30	2960×2870×2380
PFW1415 III	Φ1400×1500	800×1530	300	280-350	200-250	33	3120×2650×2660

注：技术数据如有变动，恕不另行通知。 Note: Any change of technical data will not inform additionally.

VSI冲击式破碎机

VSI VERTICAL SHAFT IMPACT CRUSHER

产品简介

VSI冲击式破碎机是细碎设备中的一款经典机型，是细碎先进技术和工艺的充分体现。主要用于高速公路、高速铁路、水电工程、机场建设、其它建筑工程等领域建设用优质砂石骨料的生产，是人工制砂和石料整形的理想设备。

Product Introduction

VSI impact crusher is a classic type of fine crushing equipment, which fully embodies advanced fine crushing technology. It is mainly used for the production of high-quality sand and stone aggregate for the construction of highways, high-speed railways, hydropower projects, airports and other construction projects. It is an ideal equipment for sand making and stone shaping.



工作原理

本机有两种进料模式，全中心进料：物料落入进料斗，经中心进料孔进入高速旋转的转子，在转子内被迅速加速，然后高速从转子内抛出，首先与反弹后自由下落的另一部分物料进行撞击，然后一起冲击到破碎腔周围的物料衬层或反击块上，先被斜向上反弹到破碎腔顶部，后又偏转向下运动，与从叶轮流道发射出来的物料撞击形成连续的材料幕，物料在涡流破碎腔内受到多次撞击、摩擦和研磨而被破碎，破碎后的物料由下部排料口排出。中心进料伴随环形瀑落进料：物料落入进料斗，经环形孔落下，被分料盘分成两股，一股经分料盘进入高速旋转的叶轮，另一股从分料盘四周下落。进入叶轮的物料被高速抛出，首先同四周自由落下的另一部分物料冲击破碎，然后一起冲击到破碎腔周围的涡状物料衬层上，被物料衬层反弹，斜向上冲击到破碎腔顶部，后又偏转向下运动，与从叶轮流道发射出来的物料撞击形成连续的材料幕。物料在涡流破碎腔内受到多次撞击、摩擦和研磨而被破碎，破碎后的物料由下部排料口排出。

Working Principle

This machine has two kinds of feed mode, the central feeding: materials fall into the hopper and enter high speed rotating rotor via center feeding mouth. Inside the rotor, materials are rapidly accelerated and thrown out of rotor with high speed. First to impact with materials which are falling freely after rebound, then hit together on the lining or back block, be inclined upward rebound to the top of the crushing cavity, then deflected downward movement, and strike with materials emitted from impeller passage to form a continuous material curtain. Materials are impacted, rubbed and ground by many times in the vortex crushing cavity to be broken finally, crushed material is discharged from bottom discharging mouth. The central feed falls with the annular waterfall: the material falls into the hopper and falls down through the annular hole, being divided into two parts by the feed plate, one part enters the high-speed rotating impeller through feed plate, the other part falls down around the feed plate. Materials in impeller are cast in high speed, firstly impacted with part of the materials free falling, then hit together into the whirlpool materials liner around the crushing cavity, rebound by material lining, oblique shocks upward to the top of the crushing cavity, then deflected downward movement, strike with materials emitted from impeller passage to form a continuous material curtain. Materials are impacted, rubbed and ground by many times in the vortex crushing cavity to be broken finally, crushed material is discharged from bottom discharging mouth.

性能特点

- 1、液压开盖装置，易于检修和维护，省时省力；
- 2、合理的破碎腔结构设计，相比传统立轴冲击破磨损减少，使用成本降低，同时产量提高；
- 3、特殊的进料破碎结构，可方便的实现“石打石”和“石打铁”破碎的自由转换；
- 4、过振动报警装置，自动检测，保证设备可靠运行；
- 5、稀油站润滑，双油泵互补供油，确保轴承润滑始终处于良好状态，延长设备使用寿命；
- 6、成品粒型优异，级配合理，细度模数可调。

Performance Features

- 1,Hydraulic cover opening device makes it easy to repair and maintain which saves time and effort;
- 2,Compared with traditional vertical shaft crusher, the reasonable structure design of crushing cavity can decrease the abrasion, reduce cost and increase the capacity;
- 3,Special feeding crushing structure can easily realize the free conversion of "stone strikes stone" and "stone strikes iron" crushing;
- 4,Vibration alarm device could detect automatically and ensure the reliable operation of equipment;
- 5,Thin oil station lubricates, double oil pumps supply oil complementary, ensure the bearing lubrication is always in good condition, this could extend service life of the equipment;
- 6,The finished product has excellent grain size, reasonable gradation and adjustable fineness modulus.



主要技术参数 Main Technical Specifications

型号 Model		VSI-7611	VSI-8518	VSI-9526	VSI-1140
处理能力 Capacity(t/h)	瀑落与中心进料 Center and Sides Feeding	120-180	200-260	300-380	450-520
	全中心进料 Center Feeding	60-90	100-130	150-190	225-260
最大进料尺寸 Max Feeding Size (mm)	软料 Soft Material	35	40	45	50
	硬料 Hard Material	30	35	40	45
转速 Rotation Speed(rpm)		1700-1890	1520-1690	1360-1510	1180-1310
双电动机功率 Double Motor Power(kw)		110	180	264	400
最大外形尺寸 Overall Dimension(mm)		3700×2150×2100	4140×2280×2425	4560×2447×2778	5000×2700×3300
重量 Weight(t)		10	12.5	16.8	25.6
振动传感器 Vibration Sensor		监测范围Inspection Scope: 0.1-20mm/s连续可调Continual Adjustment			
液压润滑站 Hydraulic Oil Pump	双油泵电动机功率 Motor Power of Double oil Pump(kw)	2×0.25			
	外形尺寸 Overall Dimension(mm)	820×520×1270			
	油箱加热器功率 Power of Oil Tank Heater (kw)	2			

注：技术数据如有变动，恕不另行通知。 Note: Any change of technical data will not inform additionally.

PG辊式破碎机

PG ROLLER CRUSHER

产品简介

PG辊式破碎机适用于矿业、建材、冶金、化工等行业，可对各种矿石、岩石、焦炭、煤、水泥熟料、陶瓷原料、矿渣、耐火材料、化工原料等中等硬度以下物料进行细碎或超细碎作业。

Product Introduction

PG roller crusher is widely used for fine or superfine crushing in the industries of mining, construction materials, metallurgy, chemical industries and so on. It could crush all kinds of materials under medium hardness, such as ore, rock, coke, coal, clinker, ceramic raw materials, slag, refractory materials, chemical materials and so on.



工作原理

双辊破碎机工作时，物料从进料口落入两破碎辊之间的V型破碎腔，受到两破碎辊相对旋转的挤压力和剪切力作用，在挤轧、剪切和啮磨下，将物料破碎成需要的粒度，然后从排料口排出。

四辊破碎机采用上、下两组破碎辊垂直排列的结构形式，形成上下两个独立破碎腔，物料经过上破碎辊破碎后，落入下破碎辊再次破碎，然后从排料口排出。

Working Principle

When double roller crusher works, the raw materials are fed in and fall into the V type crushing cavity between the two crushing rollers and crushed into qualified sizes by the extruding and cutting force of the two counter-rotating rollers, then discharged from the outlet.

Four roller crusher adopts the structural form of vertical arrangement for upper and lower crushing rollers, which forms two independent crushing chambers. Materials are crushed by upper rollers, then fall down to lower rollers to be crushed again, finally discharged via discharging outlet.



性能特点

- 1、破碎辊材质采用超耐磨合金，经过多次热处理，使用寿命是普通高锰钢的数倍；
- 2、遇有过硬或不可破碎物料时，活动辊可凭弹簧或液压系统的作用自动退让，从而保护机器不受损坏；
- 3、破碎辊的间隙可以调节，从而改变破碎粒度和生产能力；
- 4、采用无动力布料器，使物料均匀布入破碎机，从而有效保证破碎粒度，防止辊面磨损不均匀；
- 5、配置无动力刮料器，当物料水分大时，避免影响破碎粒度，防止出现粘辊、堵料现象；
- 6、采用差速运转工作方式，工作时破碎辊之间形成相互清理，避免物料结饼；
- 7、设备运行可靠，故障率低，噪音低，使用维护费用极低。

Performance Features

- 1,Material of the rollers is wear-resisting chromium molybdenum copper alloy, the rollers are heat treated for many times, so its service life is times of the common high manganese steel;
- 2,When the material is too hard or there are unbreakable materials, the active roller will draw back automatically by the force of spring or hydraulic system to protect the machine from being damaged;
- 3,The gap between the rollers is adjustable, so the output size and capacity would be changed accordingly;
- 4,This crusher adopts unpowered distributor, the materials will be evenly distributed into the crusher to ensure good output size and protect the roller surface from being worn down unevenly;
- 5,This crusher is equipped with unpowered scraper. When the raw material has high moisture content, it can avoid to affect the output size and avoid sticking the roller or blocking the machine;
- 6,It runs in different speed, the rollers do cleaning for each other to avoid the raw material caking;
- 7,This crusher has features of reliable operation, low failure rate, low noise and low maintenance cost.

主要技术参数 Main Technical Specifications

项目 Item 型号 Model	进料粒度 Feed Size(mm)	出料粒度 Output Size(mm)	生产能力 Capacity(t/h)	电机功率 Motor Power(kw)
2PG0402	<20	2-10	1-15	5.5×2
2PG0404	<30	2-10	2-25	7.5×2
2PG0604	<40	2-20	5-40	15×2
2PG0605	<40	2-20	6-50	18.5×2
2PG0806	<60	2-25	10-100	22×2
2PG1008	<80	2-30	15-130	30×2
2PG1208	<90	2-40	30-250	37×2
2PG1212	<90	2-40	40-350	55×2
2PG1612	<110	2-50	60-420	75×2
2PG1616	<110	2-50	75-550	110×2
2PG1816	<130	2-60	90-700	132×2
4PG0404	<20	0.3-5	2-20	11+15
4PG0605	<30	0.3-8	5-45	30+37
4PG0806	<40	0.3-10	8-70	37+45
4PG0809	<60	0.3-15	12-100	45+55
4PG0812	<60	0.3-15	20-130	55+75
4PG1012	<80	0.3-20	30-160	75+90
4PG1212	<90	0.3-25	45-260	90+110
4PG1216	<90	0.3-25	55-320	110+132
4PG1218	<90	0.3-25	70-400	132+160

注：技术数据如有变动，恕不另行通知。 Note: Any change of technical data will not inform additionally.

PFL立式复合破碎机

PFL VERTICAL COMPOUND CRUSHER

产品简介

PFL立式复合破碎机广泛用于矿业、冶金、建材、耐材、化工、电力等行业，可对石灰石、白云石、水泥熟料、石膏、煤块、砂岩等中等硬度以下物料进行细碎作业。

Product Introduction

This machine is widely used in the industry of mining, metallurgy, building materials, fireproof materials, chemical industry, electricity power, etc. It can crush materials with medium or less hardness into fineness, such as limestone, dolomite, cement clinker, gypsum, coal, sandstone, etc.

工作原理及特点

设备工作时，物料由进料斗落入破碎腔，被高速旋转的甩料盘抛向反击板，然后被斜下方向反弹到破碎腔，受到高速旋转的锤头的冲击，再次被抛向反击板，并重复上述破碎过程。物料在锥形破碎腔内不断被冲击、反击、挤压、磨搓，破碎后的物料呈螺旋状下落，由机器底部排出。该机具有破碎比大，破碎效率高；无筛条设置，不易堵塞；运转平稳、噪音低、振动小；结构合理，运行成本低等特点。



Working Principle and Features

When this machine works, materials are fed into crushing chamber through feeding hopper, thrown to impact plate by dump tray which is rotating in high speed. Then bounced to the crushing chamber in downward direction, impacted by the high-speed rotating hammers, and thrown to the impact plate once again, above crushing process is repeated. Materials are continuously impacted, counteracted, extruded and ground in the conical crushing chamber. Crushed materials fall in a spiral shape and discharged from the bottom of machine. The machine has features of large crushing ratio and high crushing efficiency; no screen bar setting, not easy to block; smooth operation, low noise, small vibration; reasonable structure and low operating cost.

主要技术参数 Main Technical Specifications

型号 Model	项目 Item	筒体直径 Diameter of Cylinder(mm)	进料粒度 Feeding Size (mm)	出料粒度 Output Size (mm)	生产能力 Capacity (t/h)	电机功率 Motor Power (kw)	重量 Weight (t)	外形尺寸 Overall Dimension (mm)
PFL-800		800	<50	<5,90%	5-15	22	2.1	2100×1200×1700
PFL-1000		1000	<50	<5,90%	10-30	45	3.2	2600×1400×1900
PFL-1250		1250	<50	<5,90%	20-60	75	4.7	2800×1600×2100
PFL-1500		1500	<60	<5,90%	30-80	110	7.2	3100×1900×2200
PFL-1750		1750	<60	<5,90%	40-100	160	10.8	3710×2360×2390
PFL-2000		2000	<80	<5,90%	60-130	200	15.1	4100×2660×2620

注：技术数据如有变动，恕不另行通知。 Note: Any change of technical data will not inform additionally.

PC锤式破碎机

PC HAMMER CRUSHER

产品简介

本机适用于矿业、建材、化工、冶金、饲料等行业，可对石灰石、方解石、滑石、石膏、煤炭、焦炭、粘土、矿渣等中等硬度以下物料进行中、细碎作业。

Product Introduction

This machine is widely used in industries of mining, building materials, chemical industry, metallurgy, fodder, etc. It can crush materials with medium or less hardness into medium or fine crushing, such as limestone, calcite, talc, gypsum, coal, coke, clay, slag, etc.



工作原理及特点

电动机通过三角带驱动转子，带动转子上的锤头高速旋转，物料进入破碎腔后受锤头的高速撞击、冲击、剪切以及反击板的反击作用被破碎，成品料通过机器下端筛条排出机外，出料粒度可通过调节筛条间隙来调整。该机具有结构简单、操作方便、生产效率高、投资小等优点。

Working Principle and Features

Electric motor drives rotor via V-belt to make the hammers on rotor rotate in high speed. After materials enter the crushing chamber, they are stroke, impacted, cut by hammers and impacted by impact plate, finally to be crushed. End product would be discharged via bottom bars. End product size could be adjusted by adjusting bar gap. The advantages of this machine are simple in operation, high in productivity, low in investment cost, etc.

主要技术参数 Main Technical Specifications

项目 Item 型号 Model	最大进料尺寸 Max Feeding Size (mm)	出料粒度 Output Size (mm)	处理量 Capacity (t/h)	电机功率 Motor Power (kw)	重量 Weight (t)
PC400×300	100	<15	3-10	11	0.86
PC600×400	120	<15	8-15	22	1.55
PC800×600	150	<20	10-40	55	3.1
PC1000×800	200	<30	16-65	90	6.2
PC1000×1000	300	<40	30-90	110	8.8
PC1200×1000	350	<40	45-110	132	11.5
PC1250×1250	350	<40	65-140	185	17.9
PC1400×1400	400	<40	90-200	280	35.2
PC1600×1600	400	<40	150-300	480	41

注：技术数据如有变动，恕不另行通知。 Note: Any change of technical data will not inform additionally.

GZD振动给料机

GZD VIBRATING FEEDER

产品简介

振动给料机用于把块状、颗粒状物料从贮料仓均匀、定时、连续地送入受料装置，在砂石生产线中可为破碎机连续均匀地喂料，并对物料进行预筛分。该机广泛应用于冶金、建材、矿山、化工、选矿等行业。



Product Introduction

Vibrating feeder is used to transfer shaped and granule materials into receiving equipment from the hopper evenly, timely and continuously. It could feed the crusher continuously and classify the materials primarily in sand making and stone crushing line. It is widely used in industry of metallurgy, building materials, mining, chemical industry, beneficiation, etc.

工作原理

电动机通过三角带驱动两个啮合在一起的偏心轴旋转，从而产生合成的直线激振力，使机体在支承弹簧上作强制振动，物料则以此振动为动力，在料槽内作滑动及抛掷运动，从而使物料前移而达到给料目的。当物料通过槽体上的筛条时，较小的物料可通过筛条间隙落下，起到筛分的作用。

Working Principle

Electric motor drives two engaged eccentric shafts to rotate through V-belt, thus generating the resultant linear excitation force, making the body vibrate compulsively on the supporting spring. Materials use the vibration as power to slide and throw in the material groove, thus making the materials move forward to achieve the purpose of feeding. When material passes through the screen bar in the chute, the smaller material can fall down through gap of the screen bar then to be screened.

性能特点

- 1、振动平稳，给料连续、均匀；
- 2、给料的同时预筛分细料，提高破碎效率；
- 3、噪音低，耗电少；
- 4、工作效率高，给料能力大。

Performance Features

- 1, Steady vibration, continuous and even feeding;
- 2, Pre-screening fine materials when feeding, so as to increase crushing efficiency;
- 3, Low noise and power consumption;
- 4, High working efficiency, large feeding capacity.



主要技术参数 Main Technical Specifications

型号 Model	项目 Item	料槽尺寸 Chute Size (mm)	最大进料边长 Max Feeding Size (mm)	处理能力 Capacity (t/h)	电机功率 Motor Power (kw)	重量 Weight (kg)	外形尺寸 Overall Dimension (mm)
GZD750×2500		750×2500	300	50-80	3	1590	2580×1100×1400
GZD850×3000		850×3000	400	80-120	7.5	3900	3110×1800×1600
GZD960×3800		960×3800	500	100-210	11	4210	3850×1950×1630
GZD1100×4200		1100×4200	650	140-320	15	4850	4300×2050×1660
GZD1100×4900		1100×4900	650	140-360	18.5	5500	5000×2050×1700
GZD1300×4900		1300×4900	800	180-450	22	6680	5000×2350×1750
GZD1500×6000		1500×6000	950	400-750	30	9970	6160×2920×2295

注：技术数据如有变动，恕不另行通知。 Note: Any change of technical data will not inform additionally.

YZS圆振动筛

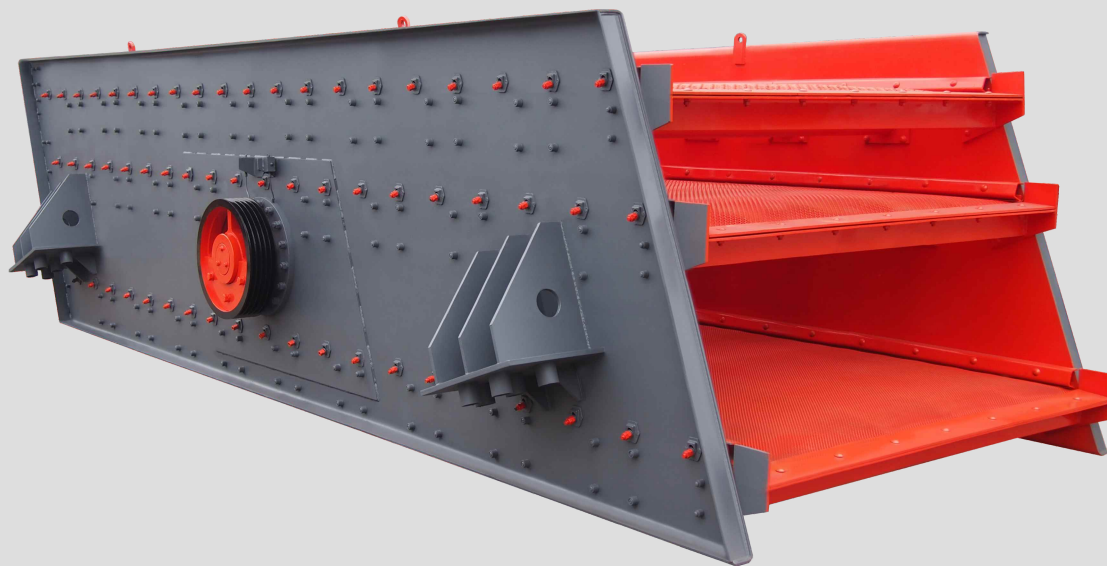
YZS CIRCULAR VIBRATING SCREEN

产品简介

本机是一种多层、高效振动筛分设备，它可以把物料按粒度大小筛分成多种规格范围的产品。广泛应用于矿山、建材、冶金、能源、化工等行业的产品筛选和分级。

Product Introduction

This machine is a vibrating screen equipment with multi-layers and high efficiency. It could screen materials into multiple levels products according to the different material size. It is widely used in industries of mining, building materials, metallurgy, energy, chemical, etc for screening and grading.



工作原理

电动机经三角带带动激振器偏心轴高速旋转，产生的离心惯性力激发筛体产生一定振幅的圆运动，物料在倾斜的筛面上受到筛体传给冲量而产生连续的抛掷运动，物料与筛面相遇的过程中使小于筛孔的颗粒透过筛网，从而实现分级。

Working Principle

Electric motor drives eccentric shaft of vibrator via V-belt to rotate in high speed. The generated centrifugal inertial force stimulates the screen body to produce circular motion with certain amplitude, and the material is subjected to continuous throwing motion on the inclined screen surface by the impulse transmitted from screen body. During the meeting process of material with screen surface, particles smaller than the sieve hole are transmitted through the screen, thus achieving classification.

性能特点

- 1、激振力强，筛分效率高，处理量大；
- 2、结构可靠，使用寿命长，噪音小，电耗低；
- 3、物料筛淌线长，筛分规格多；
- 4、构造简单，使用维护方便。

Performance Features

- 1, Strong exciting force, high screening efficiency, big capacity;
- 2, Reliable structure, long service life, small noise, low electricity consumption;
- 3, Long flowing line and various screening grades;
- 4, Simple structure, convenient in operation and maintenance.



主要技术参数 Main Technical Specifications

项目 型号 Item Model	筛面规格 Screen Size (mm)	筛面层数 Screen Decks	筛孔尺寸 Screen Hole Size(mm)	最大进料尺寸 Max Feeding Size(mm)	处理能力 Capacity (t/h)	电机功率 Motor Power (kw)	重量 Weight (t)	外形尺寸 Overall Dimension (mm)
2YZS1237	3700×1200	2	3-50	200	10-80	11	2.40	4570×1900×1200
3YZS1237	3700×1200	3	3-50	200	10-80	11	3.05	4730×1900×1650
2YZS1548	4800×1500	2	3-100	200	30-200	15	5.35	5740×2180×1220
3YZS1548	4800×1500	3	3-100	200	30-200	15	6.07	5910×2180×1670
2YZS1848	4800×1800	2	3-100	300	50-300	18.5	6.15	5740×2540×1220
3YZS1848	4800×1800	3	3-100	300	50-300	18.5	6.93	5910×2540×1670
2YZS1860	6000×1800	2	3-100	300	60-400	22	6.95	6960×2540×1220
3YZS1860	6000×1800	3	3-100	300	60-400	22	7.70	7130×2540×1670
4YZS1860	6000×1800	4	3-100	300	60-400	30	8.70	7300×2540×2100
2YZS2160	6000×2100	2	3-100	400	80-500	22	8.48	7010×2980×1380
3YZS2160	6000×2100	3	3-100	400	80-500	30	9.24	7160×2980×1780
4YZS2160	6000×2100	4	3-100	400	80-500	30	10.45	7370×2980×2240
2YZS2460	6000×2400	2	3-150	400	100-600	30	12.35	7010×3290×1380
3YZS2460	6000×2400	3	3-150	400	100-600	37	13.85	7160×3290×1780
4YZS2460	6000×2400	4	3-150	400	100-600	37	15.60	7370×3290×2240

注：技术数据如有变动，恕不另行通知。 Note: Any change of technical data will not inform additionally.

XSD洗砂机

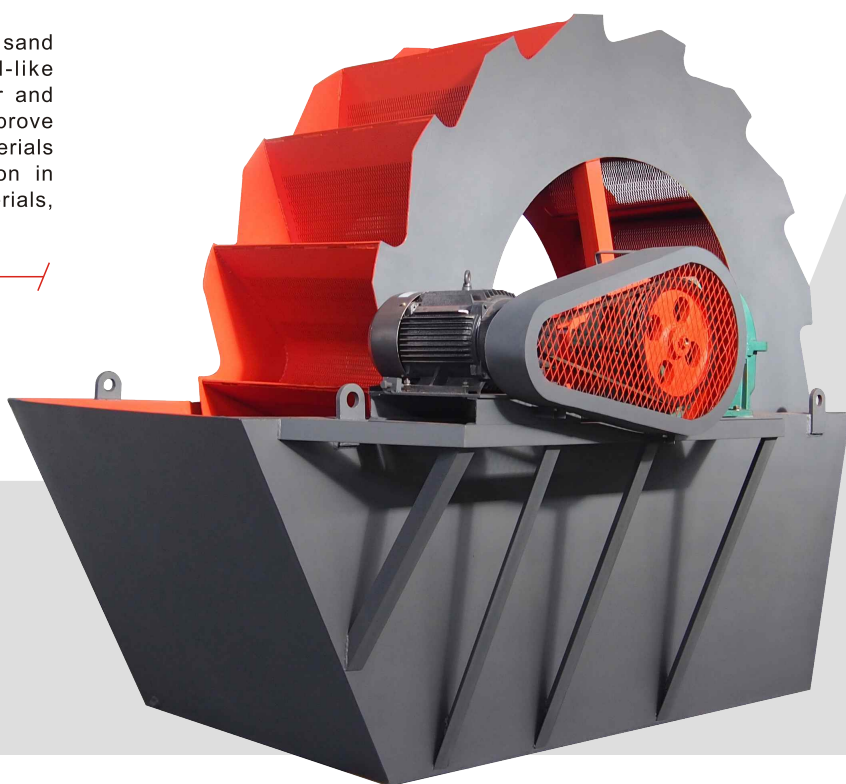
XSD SAND WASHER

产品简介

XSD洗砂机是一种轮斗式高效洗砂设备。它可以洗去砂子中的泥土、粉尘等杂质，从而提高砂子的质量。主要用于冶金、建材、水电等行业物料的洗选、分级和除杂。

Product Introduction

XSD sand washer is a high-efficiency sand washing equipment adopting wheel-like structure. It can wash out dirt, powder and other impurities from sand, thus to improve sand quality. It is mainly used for materials washing, classification and edulcoration in industries of metallurgy, building materials, water and electricity, etc.



工作原理

电动机通过三角带、减速机带动叶轮缓慢转动，砂子进入洗槽后，在叶轮的带动下翻滚，并互相摩擦，除去覆盖在砂子表面的杂质，同时破坏包覆砂粒的水汽层，以利于脱水。持续加水形成的水流及时将杂质及比重小的异物带走，并从溢水口排出。干净的砂子随着叶轮的旋转被带出洗槽排出。

Working Principle

Electric motor drives the impeller to rotate slowly through V-belt and reducer. After the sand enters washing tank, it rolls under the drive of impeller and frictions with each other to remove impurities covering on surface of the sand and destroy the water vapor layer covering the sand to facilitate dehydration. Water flow formed by adding water continuously will remove impurities and foreign matter with small proportion and discharge them from the overflow outlet. Clean sand is carried out of the wash tank with the rotation of the impeller.

性能特点

- 1、处理量大，功率消耗小；
- 2、结构简单合理，占地面积小；
- 3、设备使用寿命长，维护成本极低；
- 4、细砂和石粉流失极少，所洗建筑砂级配和细度模数达到标准要求。

Performance Features

- 1, Large capacity, small power consumption;
- 2, Simple but reasonable structure, small floor space;
- 3, Long service life, low maintenance cost;
- 4, Little loss of fine sand and stone powder, the gradation and fineness modulus of washed construction sand meet the standard requirements.



主要技术参数 Main Technical Specifications

型号 Model	项目 Item	叶轮规格 Impeller Size (mm)	最大进料粒度 Max Feeding Size (mm)	处理量 Capacity (t/h)	电机功率 Motor Power (kw)	重量 Weight (t)	外形尺寸 Overall Dimension (mm)
XSD2610		Φ2600×1000	10	20-50	5.5	2.68	3255×1982×2690
XSD2816		Φ2800×1600	10	30-60	7.5-11	3.05	3540×3000×2880
XSD3016		Φ3000×1600	10	50-120	11-15	3.26	3845×3000×3080
XSD3620		Φ3600×2000	10	60-150	18.5	4.30	4500×3206×3480

注：技术数据如有变动，恕不另行通知。 Note: Any change of technical data will not inform additionally.

XL 砂石洗选机

XL SAND AND STONE WASHER

产品简介

XL砂石洗选机适用于冶金、矿山、建材等行业物料的洗选、分级、除杂、脱水作业。其中轻型适用于细粒度物料的洗选作业，重型适用于粗粒度物料的洗选作业。

Product Introduction

XL sand and stone washer is used for material washing, classification, edulcoration and dehydration in industries of metallurgy, mining, building materials, etc. The light type is suitable for washing and selecting fine-grained materials and the heavy type is suitable for washing and selecting coarse-grained materials.



性能特点

- 1、整体结构设计合理，运行稳定，洗选效率高，处理量大，洗净度高；
- 2、专业设计的导料板和可调式长溢流堰板，配合经过优化的螺旋速度，确保物料洗选、分级的精度；
- 3、优化设计的排水沟槽，确保物料中的水份最大限度的脱除；
- 4、新型的密封结构，最大限度的降低了设备的维修工作量和保养成本；
- 5、螺旋叶片采用抗磨材料制造，确保设备工作的连续性和较低的使用成本。

Performance Features

- 1, Reasonable structure design, steady performance, high washing efficiency, large capacity, high absterstion degree;
- 2, The professionally designed guide plate and adjustable long overflow weir plate cooperating with the optimized screw speed ensures the accuracy of material washing and classification;
- 3, Optimal designed water discharging channel guarantees the water in the raw materials being removed in the highest degree;
- 4, The new type seal structure reduces the maintenance work and cost in the highest degree;
- 5, The screw blade is made of wear-resistant material, so that the machine can work continuously and it also reduces the operation cost.



主要技术参数 Main Technical Specifications

项目 型号 Model	螺旋直径 Spiral Diameter(mm)	螺旋数量 Number of Spiral	入选粒度 Feeding Size(mm)	耗水量 Water Consumption (m ³ /h)	生产能力 Capacity (t/h)	功率 Motor Power(kw)	外形尺寸 Overall Dimension (mm)	重量 Weight (t)
XL-762	762	1	<10	9-63	≤75	11	9178×2650×1808	5.20
XL-914	914	1	<10	10-90	≤100	15	9310×2830×2134	6.35
XL-1118	1118	1	<10	20-160	≤175	22	11830×3048×2230	8.57
2XL-762	762	2	<10	20-140	≤140	2×11	9178×3625×1808	7.45
2XL-914	914	2	<10	30-180	≤200	2×15	9310×3870×2134	11.30
2XL-1118	1118	2	<10	50-400	≤350	2×22	11830×4170×2230	15.90
XLZ-762	762	1	<60	150-250	≤80	22	7775×1290×2034	9.80
XLZ-914	914	1	<60	200-300	≤120	30	8324×1382×2112	11.80
XLZ-1118	1118	1	<75	250-350	≤180	37	8703×1681×2176	13.90
2XLZ-762	762	2	<60	300-400	≤150	2×22	7775×2090×2068	16.80
2XLZ-914	914	2	<60	350-450	≤200	2×30	8324×2336×2112	20.80
2XLZ-1118	1118	2	<75	450-550	≤300	2×37	8703×2861×2176	23.87

注：技术数据如有变动，恕不另行通知。 Note: Any change of technical data will not inform additionally.

SZF直线振动筛

SZF LINEAR VIBRATING SCREEN

产品简介

SZF直线振动筛应用于化工、建材、磨料、塑料、医药、粮食等行业，用于对颗粒状、粉状物料的筛选和分级。该机利用振动电机作为振动源，使物料在筛网上被抛起，同时向前作直线运动，物料与筛面相遇过程中，小于筛孔的物料逐层透过筛网实现分级，然后从各自的出料口排出。该机具有能耗低、效率高、结构简单、易维修、全封闭结构无粉尘溢散等优点。



Product Introduction

SZF linear vibrating screen is used in industries of chemical, building materials, abrasive materials, plastic, medicine, food, etc. It could screen and classify granular materials and powder materials. Vibrating motor is used as vibrating source, materials are thrown up on screen, then move straight ahead. When materials come into contact with screen, materials smaller than screen hole size would be classified layer by layer, then discharged from different discharging outlet. It has advantages of low consumption, good efficiency, simple structure and no dust spillage because of the whole sealing structure.

主要技术参数 Main Technical Specifications

项目 型号 Model	筛面规格 Screen Size (mm)	物料粒度 Material Size (mm)	振次 Vibrating Times (times/min)	筛面倾角 Screen Obliquity	振幅 Amplitude (mm)	层数 Screen Decks	功率 Power (kw)
SZF-520	500×2000	0.074-60	960	1°-7°	1-4.5	1-6	2×(0.37-0.75)
SZF-525	500×2500	0.074-60	960	1°-7°	1-4.5	1-6	2×(0.37-0.75)
SZF-530	500×3000	0.074-60	960	1°-7°	1-4.5	1-6	2×(0.37-0.75)
SZF-918	900×1800	0.074-60	960	1°-7°	1-4.5	1-6	2×(0.75-1.1)
SZF-1020	1000×2000	0.074-60	960	1°-7°	1-4.5	1-6	2×(0.75-1.1)
SZF-1025	1000×2500	0.074-60	960	1°-7°	1-4.5	1-6	2×(0.75-1.5)
SZF-1030	1000×3000	0.074-60	960	1°-7°	1-4.5	1-6	2×(1.1-1.5)
SZF-1225	1200×2500	0.074-60	960	1°-7°	1-4.5	1-6	2×(1.1-1.5)

注：技术数据如有变动，恕不另行通知。 Note: Any change of technical data will not inform additionally.

胶带输送机

BELT CONVEYOR

产品简介

本机广泛应用于矿山、建材、冶金、煤炭等行业，用来输送松散物料或成件物品。根据输送工艺要求，可以单台输送，也可以多台组合，或与其它输送设备组成水平或倾斜的输送系统，以满足不同布置形式的作业线需要。该机具有输送量大、结构简单、维修方便、部件标准化等优点。

Product Introduction

This machine is used for transferring bulk or packaged materials. It is widely used in the industry of mining, building materials, metallurgy, coal and so on. According to various transferring requirements, the transferring system can be single or multiple conveyors or combined with other equipment to make up slope or horizontal transfer system to meet the need of different working conditions. The machine has advantages of large transfer quantity, simple operation, convenient maintenance and standard parts of the conveyor.



主要技术参数 Main Technical Specifications

胶带宽度 Belt Width(mm)	输送长度/功率 Conveying Length(m)/Power(kw)			输送速度 Transporting Speed (m/s)	输送量 Capacity (t/h)
400	≤12/2.2	12-20/2.2-4	20-25/3.0-7.5	1.25-2.0	30-60
500	≤12/3	12-20/3-5.5	20-30/5.5-7.5	1.25-2.0	40-80
650	≤12/4	12-20/4-5.5	20-30/5.5-11	1.25-2.0	80-120
800	≤10/4	10-15/4-5.5	15-30/5.5-15	1.25-2.0	120-200
1000	≤10/5.5	10-20/5.5-11	20-40/11-22	1.25-2.0	200-320
1200	≤10/7.5	10-20/7.5-15	20-40/15-30	1.25-2.0	290-480
1400	≤10/11	10-20/11-22	20-40/22-45	1.25-2.0	400-680
1600	≤10/15	10-20/22-30	20-50/30-75	1.25-2.0	600-1080

注：技术数据如有变动，恕不另行通知。 Note: Any change of technical data will not inform additionally.

移动破碎站

MOBILE CRUSHING PLANT

产品简介

YCZ系列移动破碎站是由破碎、筛分等设备与轮胎式拖车合理结合在一起组成，可以根据生产场地变更而灵活移动的破碎筛分生产线。

Product Introduction

YCZ series mobile crushing plant consists of crushing and screening, reasonably combined with tyred trailer. It could move flexibly based on change of working site.

性能特点

- 1、适应性强，机动灵活，能够快速进入工作模式；
- 2、采用标准轮胎式车桥及牵引转向轴，更有利于公路运输转场；
- 3、结构设计紧凑，节省空间，减少生产现场占地面积；
- 4、设备工艺合理流畅，选型匹配度高，运行效率高；
- 5、设备基础处理简单快速，大大减少土建施工周期；
- 6、安装方便快捷，安全高效；
- 7、根据施工需要可以快速转场和再安装；
- 8、配套齐全，接电即可运行生产；
- 9、配置组合灵活，可单机独立作业，也可粗碎、中碎、细碎、筛分等组合成多段破碎筛分系统。





Performance Features

- 1, Strong adaptability, flexible and able to enter working mode quickly;
- 2, Standard tyred axle and traction steering axle are adopted, which is more conducive to highway transportation transfer;
- 3, Compact structure design saves space and reduces the floor area of production site;
- 4, The equipment process is reasonable and smooth, with high type matching degree and high operation efficiency;
- 5, The management of equipment foundation is simple and fast, greatly reduces the civil construction period;
- 6, Easy and fast installation, safe and efficient;
- 7, According to the construction needs, it can be quickly transferred and re-installed;
- 8, Complete supporting facilities, once electricity is connected, it could work immediately;
- 9, The configuration combination is flexible, can not only be treated as a single machine for independent operation, but also be coarse crushing, medium crushing, fine crushing, screening and other combinations into a multi-stage crushing and screening system.

粗碎移动站 Coarse Crushing Mobile Plant

型号 Model	配套设备 Corollary Equipment		给料尺寸 Feeding Size(mm)	处理量 Capacity (t/h)	主设备功率 Main Equipment Power(kw)
	破碎设备 Crushing Equipment	给料设备 Feeding Equipment			
YCZ-E80	PE500×750	GZD850×3000	<425	40-120	62.5
YCZ-E120	PE600×900	GZD960×3800	<500	60-160	86
YCZ-E180	PE750×1060	GZD1100×4200	<630	110-270	125
YCZ-E260	PE900×1200	GZD1300×4900	<750	150-380	154
YCZ-EW60	PEW400×600	GZD850×3000	<350	15-75	44.5
YCZ-EW220	PEW760×1100	GZD1100×4200	<640	150-330	125
YCZ-EW280	PEW860×1100	GZD1300×4900	<720	200-450	154
YCZ-EW420	PEW1100×1200	GZD1500×6000	<930	300-650	215

注：技术数据如有变动，恕不另行通知。 Note: Any change of technical data will not inform additionally.



中碎筛分移动站 Medium Crushing Mobile Plant

型号 Model	配套设备 Corollary Equipment		给料尺寸 Feeding Size(mm)	处理量 Capacity (t/h)	主设备功率 Main Equipment Power(kw)
	破碎设备 Crushing Equipment	筛分设备 Screening Equipment			
YCZ-F70	PF1010	3YZS1548	<300	50-90	90
YCZ-F120	PF1214	3YZS1860	<300	90-180	154
YCZ-F175	PF1315	3YZS2160	<350	120-250	190
YCZ-FW125	PFW1214III	3YZS1860	<250	90-190	154
YCZ-FW200	PFW1315III	3YZS2160	<300	150-270	190
YCZ-FW260	PFW1318III	3YZS2160	<300	220-320	230
YCZ-Y-B70	PYB900	3YZS1548	<115	50-90	70
YCZ-Y-B120	PYB1200	3YZS1860	<145	110-170	132
YCZ-CS-B90	CZS36B	3YZS1848	<152	45-165	93.5
YCZ-CS-B180	CZS51B	3YZS2160	<220	109-360	190
YCZ-HP-C160	HPC200C1	3YZS1860	<185	150-250	182
YCZ-HP-C240	HPC300C2	3YZS2160	<230	220-440	280
YCZ-HS-C130	HSC100C2	3YZS1860	<240	85-170	112
YCZ-HS-C210	HSC160C2	3YZS2160	<360	120-345	190

注：技术数据如有变动，恕不另行通知。 Note: Any change of technical data will not inform additionally.



细碎筛分移动站 Fine Crushing and Screening Mobile Plant

型号 Model	配套设备 Corollary Equipment		给料尺寸 Feeding Size(mm)	处理量 Capacity (t/h)	主设备功率 Main Equipment Power(kw)
	破碎设备 Crushing Equipment	筛分设备 Screening Equipment			
YCZ-V60	VSI8518	3YZS1848	<40	100-130	198.5
YCZ-V85	VSI9526	3YZS1860	<45	150-190	286
YCZ-CS-D70	CZS36D	3YZS1848	<85	27-130	93.5
YCZ-CS-D120	CZS51D	3YZS1860	<113	36-240	182
YCZ-HP-F100	HPC200F2	3YZS1860	<75	90-190	182
YCZ-HP-F150	HPC300F2	3YZS2160	<80	110-240	280
YCZ-HS-F80	HSC100F	3YZS1848	<135	45-115	108.5
YCZ-HS-F125	HSC160F	3YZS1860	<185	66-210	182

注：技术数据如有变动，恕不另行通知。 Note: Any change of technical data will not inform additionally.

石料生产线

STONE CRUSHING PLANT

生产线简介

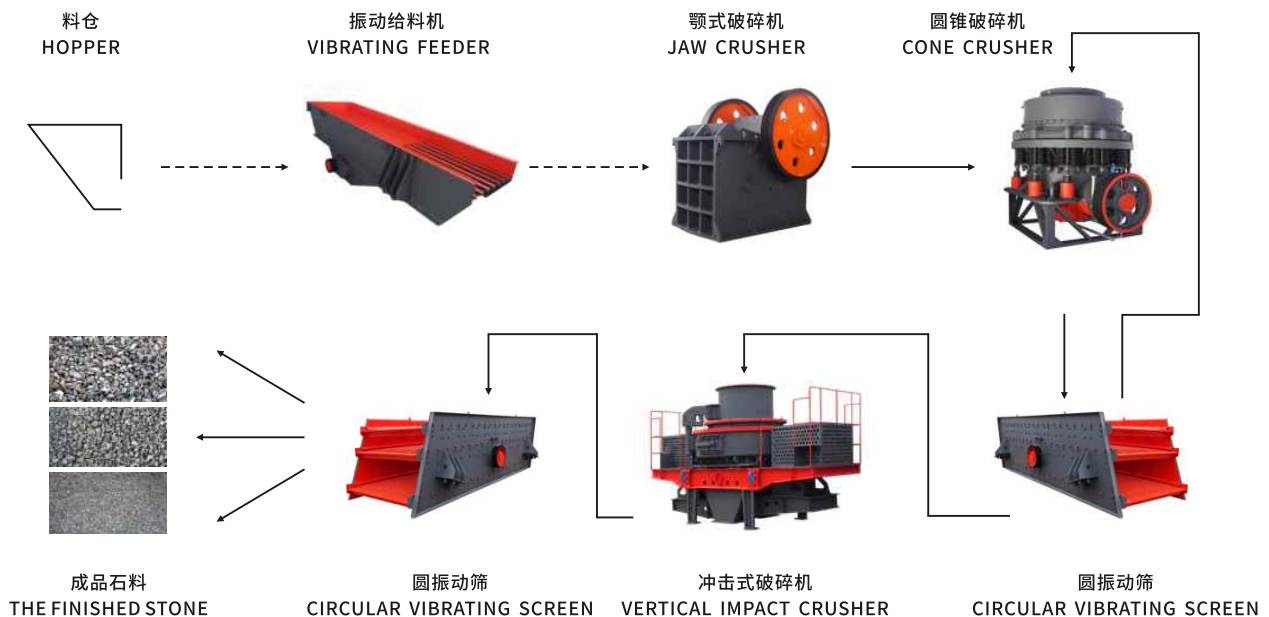
石料生产线主要由振动给料机、颚式破碎机、圆锥破碎机、反击式破碎机、立式冲击破碎机、振动筛、胶带输送机、电控系统等组成。可对石灰石、大理石、花岗岩、玄武岩、河卵石等物料进行破碎、筛分，生产多种粒度规格的建设用砂石料，处理能力30-800吨/小时。可根据石料种类以及客户对石料粒度、产量的要求，为客户提供合理、经济的设备配置方案。

石料生产线流程

高硬度物料的破碎：大块石料由铲车送入料仓，通过料仓底部的振动给料机均匀地送入颚式破碎机进行粗碎，粗碎后的石料由胶带输送机送至圆锥破碎机进行细碎，细碎后的石料由胶带输送机送至振动筛进行筛分，不符合粒度要求的石料由胶带输送机返回圆锥破碎机进行再次破碎，符合粒度要求的石料由胶带输送机送至立式冲击破碎机进行整形处理，整形后的石料由胶带输送机送至振动筛进行筛分，筛分出不同粒度规格的石子，分别由胶带输送机送往成品料堆。

低硬度物料的破碎：低硬度物料进行石料生产时，粗碎仍采用颚式破碎机，二级细碎只采用反击式破碎机，无需配备立式冲击破碎机进行整形。反击式破碎机破碎后的物料由胶带输送机送至振动筛进行筛分，筛分出不同粒度规格的石子，不符合粒度要求的大块石子由胶带输送机返回到反击式破碎机进行再次破碎，符合粒度要求的石子分别由胶带输送机送往成品料堆。

高硬度物料破碎流程图 High Hardness Material Crushing Flowsheet



备注/Note:

1、“-----”：流槽；“——>”：胶带输送机。“----->”：chute；“——>”：belt conveyors.

2.以上为典型的石料生产线流程配置，可根据客户要求，提供多种生产线配置。

The drawing is an example about Stone Crushing Plant configuration, we can provide various configurations as customers' requests.

Plant Introduction

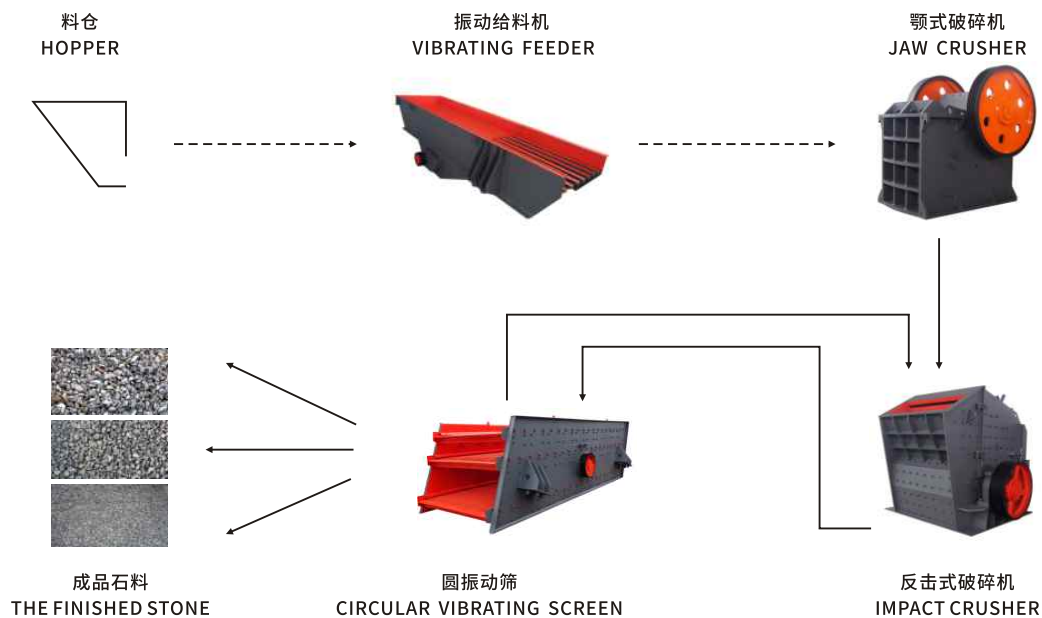
Stone crushing plant mainly includes vibrating feeder, jaw crusher, cone crusher, impact crusher, vertical shaft impact crusher, vibrating screen, belt conveyor, electric control panel, etc. It could crush and screen various materials such as limestone, marble, granite, basalt, river stone, etc to produce sand and gravels for construction with multiple granularity specifications. Its crushing capacity could be 30-800 tph. We could provide reasonable and economical equipment configuration designs based on material type and clients' request for stone granularity and project capacity.

Process of Stone Crushing Plant

High hardness material crushing: large pieces of stone would be fed into the silo by forklift, then transferred to jaw crusher evenly for primary crushing by vibrating feeder below the silo. Crushed material would be transferred to cone crusher by belt conveyor for fine crushing process, finely crushed material would be transferred to vibrating screen by belt conveyor to separate. Materials which don't meet requirement would be returned to cone crusher for second crushing, materials which meet the requirement would be transferred to vertical shaft impact crusher for shaping, shaped stones would be transferred to vibrating screen by belt conveyor to separate. Various sizes of screened material would be transferred to different piles by belt conveyor.

Low hardness material crushing: when materials with low hardness are crushed for stone production, jaw crusher is still used for coarse crushing, and impact crusher is only used for secondary fine crushing, vertical impact crusher is not needed for shaping. The crushed materials of impact crusher are sent to the vibrating screen by the belt conveyor for screening to get various granularity stones. The large stones that do not meet the particle size requirements are returned to impact crusher by the belt conveyor for re-crushing. The stones with the particle size requirements are respectively sent to the finished material pile by belt conveyor.

低硬度物料破碎流程图 Low Hardness Material Crushing Flowsheet



备注/Note:

1、“---->”：流槽；“——>”：胶带输送机。“---->”：chute；“——>”：belt conveyors.

2.以上为典型的石料生产线流程配置，可根据客户要求，提供多种生产线配置

The drawing is an example about Stone Crushing Plant configuration, we can provide various configurations as customers' requests.

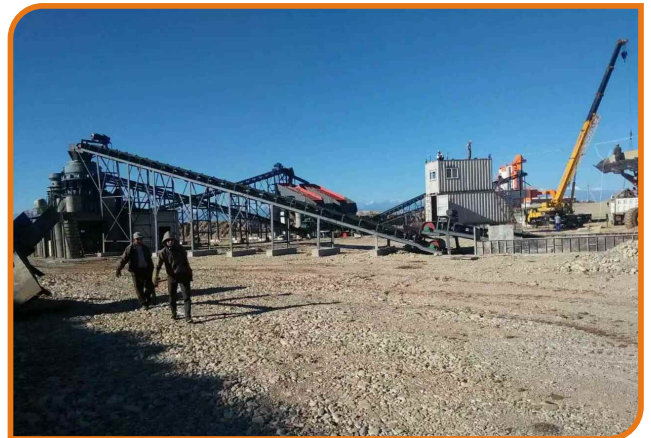
性能特点

1. 自动化程度高，整条生产线除了对设备的开机、停机及日常维护之外，几乎不需要人工操作；
2. 生产效率高，运行成本低，收益高；
3. 成品石子粒度均匀，粒形好，石粉产出率低；
4. 采用先进的电控操作系统，确保整条生产线安全、可靠运行。



Performance Features

- 1, High degree of automatic operation; the entire production line requires almost no manual operation except for machine starting, stopping and routine maintenance;
- 2, High productivity, low investment and good earning;
- 3, Regular end product granularity, good grain shape and low powder output;
- 4, Adapting high advanced control system to ensure security and reliable operation of the complete production line.



制砂生产线

SAND MAKING LINE

生产线简介

制砂生产线主要由振动给料机、颚式破碎机、圆锥破碎机（或反击式破碎机）、立式冲击破碎机（制砂机）、振动筛、洗砂机、胶带输送机、电控系统等组成，可将石灰石、花岗岩、玄武岩、河卵石等物料加工成建设用砂子，设计产量30-500吨/小时。

Production Line Introduction

Sand making line consists of vibrating feeder, jaw crusher, cone crusher (or impact crusher), vertical shaft crusher (sand making machine), vibrating screen, sand washer, belt conveyor, electric control system, etc. Could crush materials such as limestone, granite, basalt, river stone, etc into sand used in construction. Designed capacity is 30-500 tph.

性能特点

- 1、生产效率高，运行成本低；
- 2、操作简单，使用方便；
- 3、成品砂粒形好；
- 4、成品砂级配合理，细度模数可调。

Performance Features

- 1, High production efficiency, low investment;
- 2, Easy in operation and convenient in usage;
- 3, Good grain shape for end products;
- 4, The sand can be screened into different grade and the size of sand is adjustable.

制砂生产线流程

大块石料由铲车送入料仓，通过料仓底部的振动给料机均匀地送入颚式破碎机进行粗碎，粗碎后的石料由胶带输送机送至圆锥破碎机（或反击式破碎机）进行中碎，中碎后的石料由胶带输送机送至振动筛进行筛分，不能满足制砂机进料要求的石料由胶带输送机返回圆锥破碎机（或反击式破碎机）进行再次破碎，能满足制砂机进料要求的石料由胶带输送机送至制砂机进行细碎制砂，制砂机细碎后的石料由胶带输送机送至振动筛进行筛分，不符合砂子粒度要求的大颗粒石料由胶带输送机返回制砂机重新破碎，符合粒度要求的成品砂子进入洗砂机进行清洗，清洗后的砂子由胶带输送机送往成品料堆。

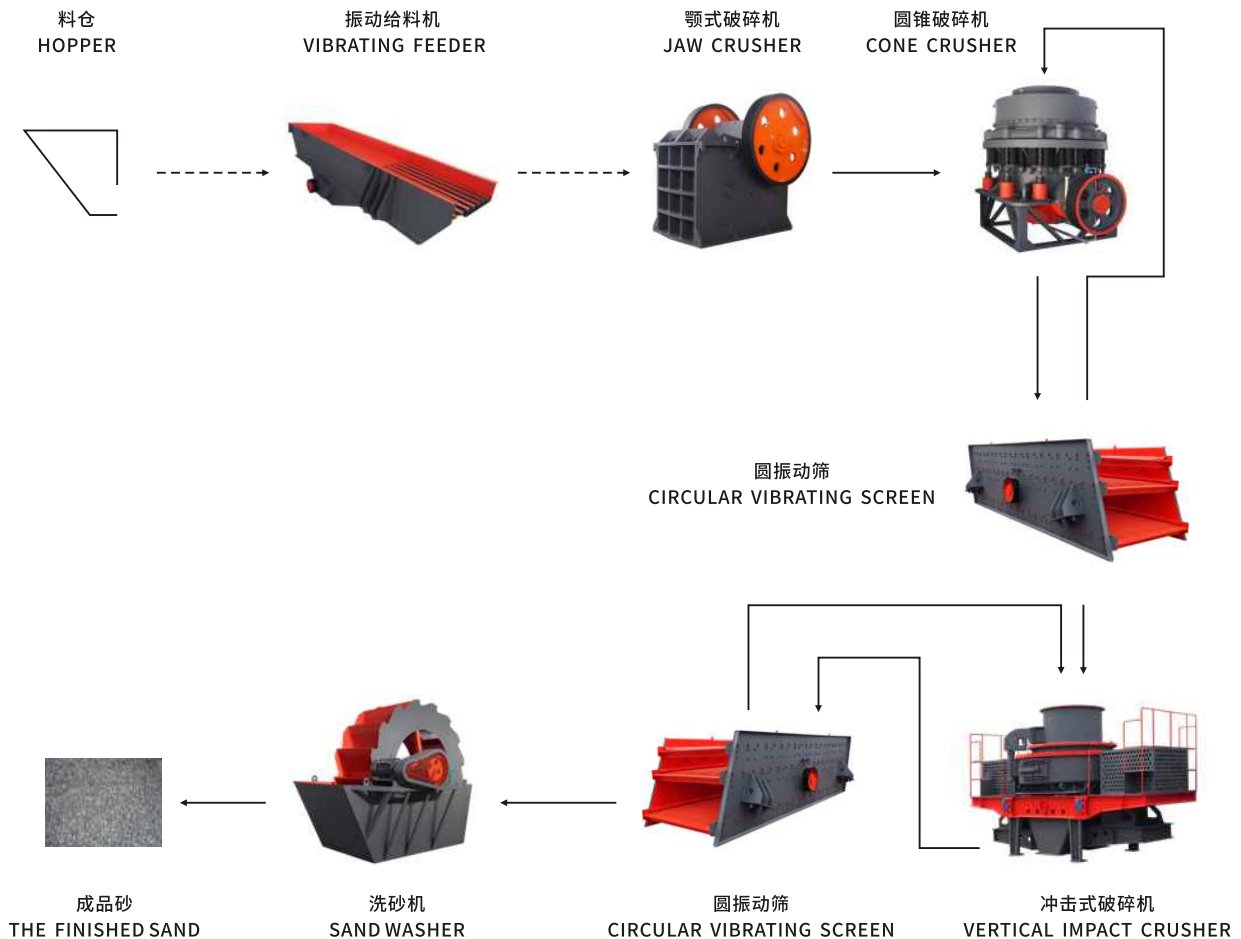
备注：高硬度物料制砂，中碎设备采用圆锥破碎机；低硬度物料制砂，中碎设备采用反击式破碎机。

Sand Making Line Flowsheet

Large size stone is fed into silo by forklift, then transferred to jaw crusher for primary crushing by vibrating feeder below the silo, primary crushed stone would be transferred to cone crusher or impact crusher by belt conveyor for medium crushing, the crushed stone would be sent to the vibrating screen for screening by belt conveyor. Materials which can not meet the requirement of sand making machine would return to cone crusher(or impact crusher) by belt conveyor to be crushed again, materials which can meet the requirement of sand making machine would be fed into sand making machine for fine crushing process. Then finely crushed materials would be transferred to vibrating screen for screening, the large-particle stone material that does not meet the requirements shall be returned to the sand making machine by the belt conveyor for re-crushing, and the finished sand that meets the requirements of particle size shall enter the sand washing machine for cleaning, and the sand after cleaning shall be sent to the finished material pile by belt conveyor.

Note: Cone crusher is used as medium crushing equipment in sand making of high hardness materials, and impact crusher is used as medium crushing equipment in sand making of low hardness materials.

制砂生产线流程图 Sand Making Line Flowsheet



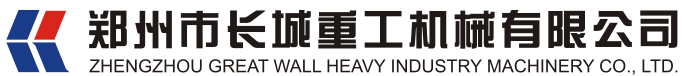
备注/Note:

1、“--->”: 流槽; “——>”: 胶带输送机。 “--->”: chute; “——>”: belt conveyors.

2. 以上为典型的制砂生产线流程配置, 可根据客户要求, 提供多种生产线配置。

The drawing is an example about Sand Making Plant configuration, we can provide various configurations as customers' requests.





地址：郑州市上街区龙江路15号

ADD: No. 15, Longjiang Road, Shangjie District, Zhengzhou City, China.

电话：0371-56509599 56509799

TEL:0086-371-63769781 63769782

网址：<http://www.cczg.net>

Website: <https://www.greatwallcrusher.com>

电子邮箱：web@greatwallgroup.cn

E-mail:sales@greatwallcrusher.com